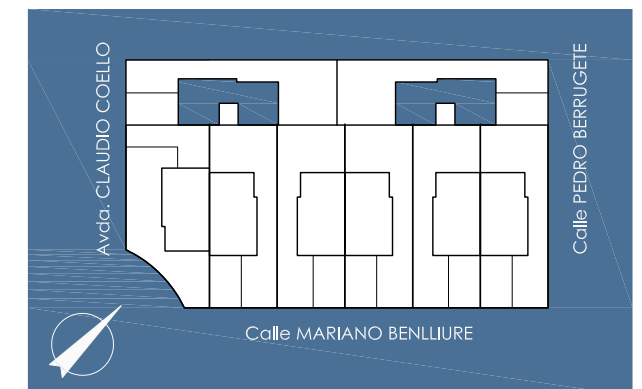
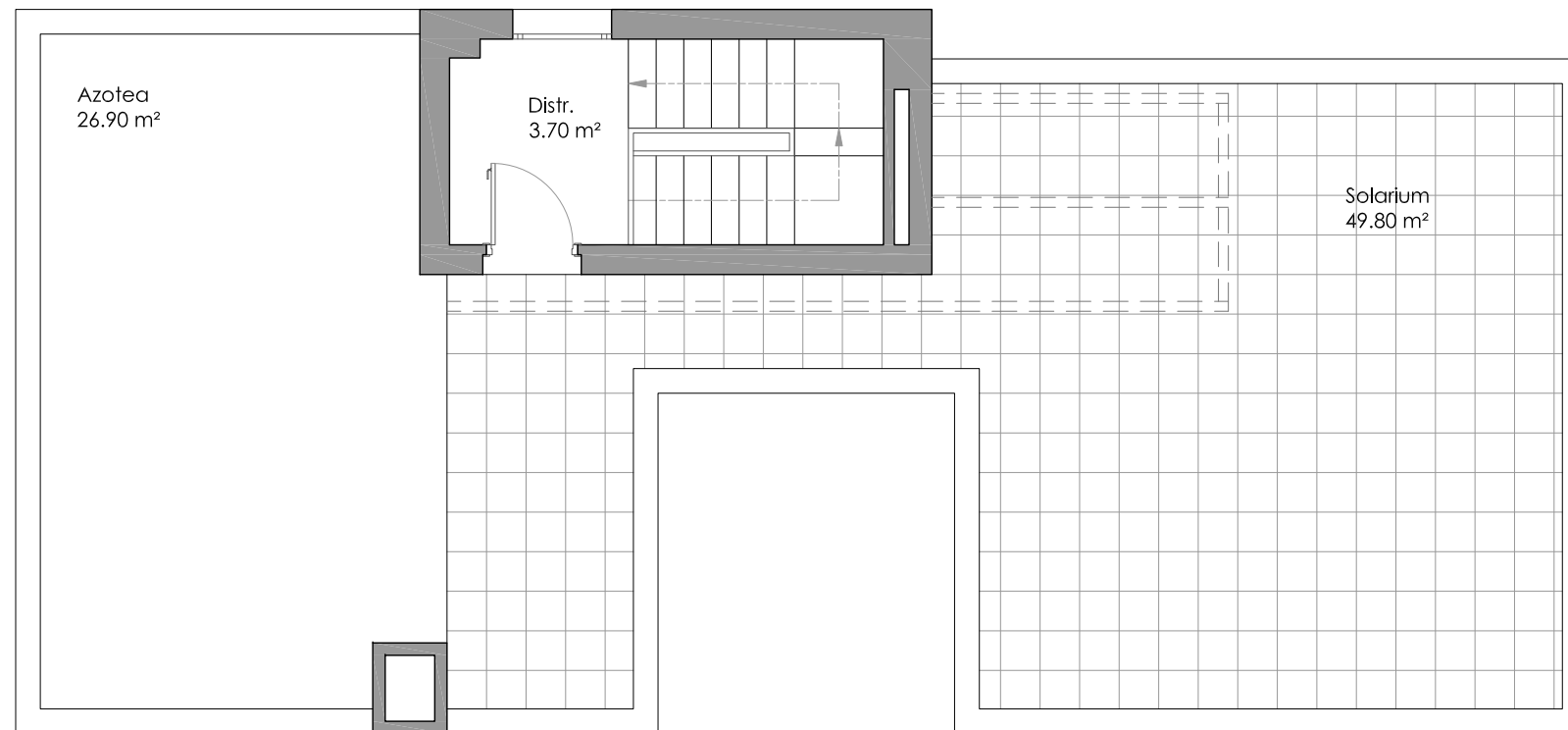
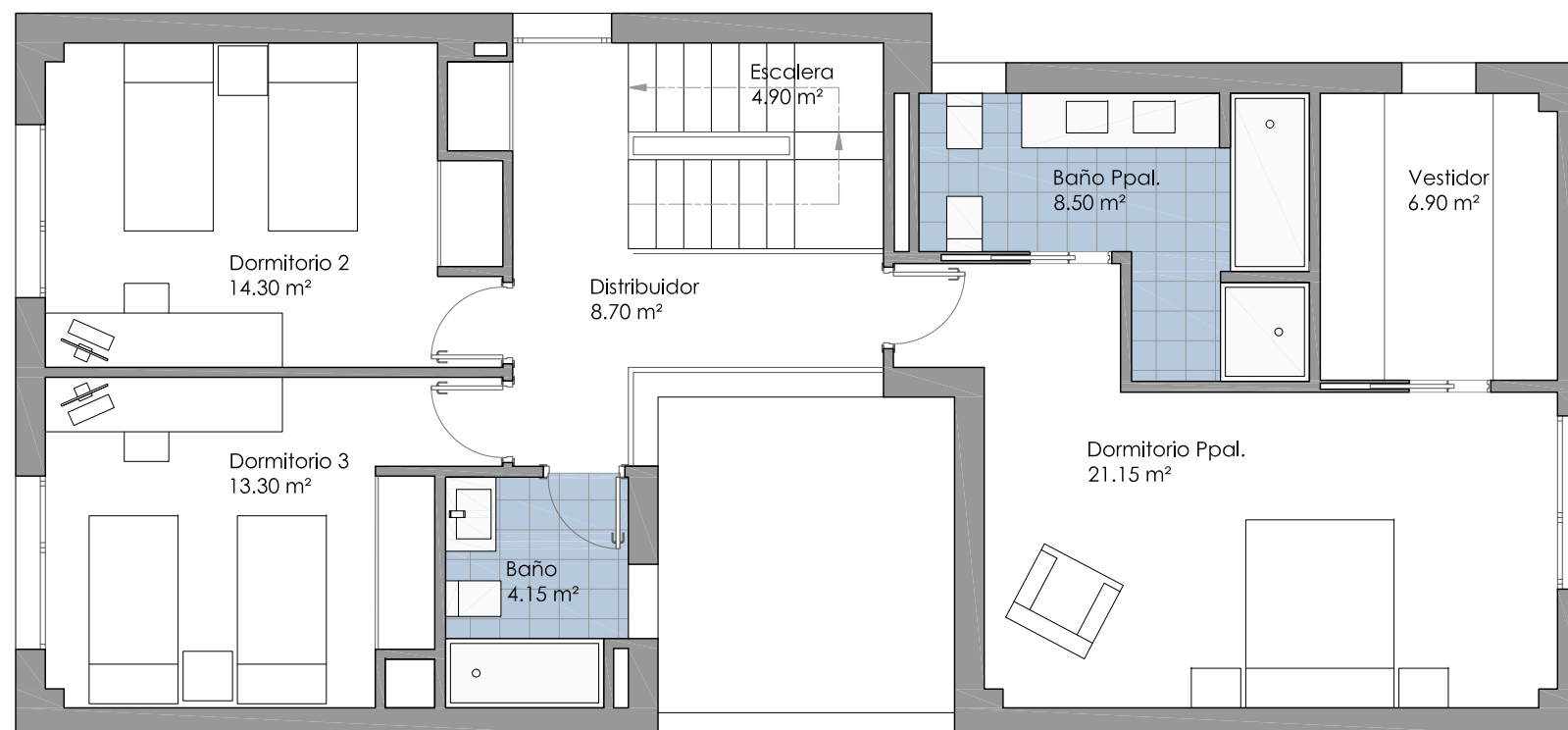


VIVIENDA:	TIPO 2
DORMITORIOS:	4
PLANO:	SÓTANO y BAJA
Sup. ÚTIL:	216.45 m <sup>2</sup>
Sup. CONSTRUIDA:	269.75 m <sup>2</sup>
Sup. PARCELA:	345.95 m <sup>2</sup>





P. ÁTICO



P. PRIMERA

VIVIENDA:	TIPO 2
DORMITORIOS:	4
PLANO:	PRIMERA y ÁTICO
Sup. ÚTIL:	216.45 m <sup>2</sup>
Sup. CONSTRUIDA:	269.75 m <sup>2</sup>
Sup. PARCELA:	345.95 m <sup>2</sup>

